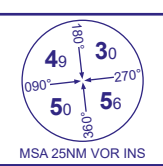


INSTRUMENT APPROACH CHART - ICAO

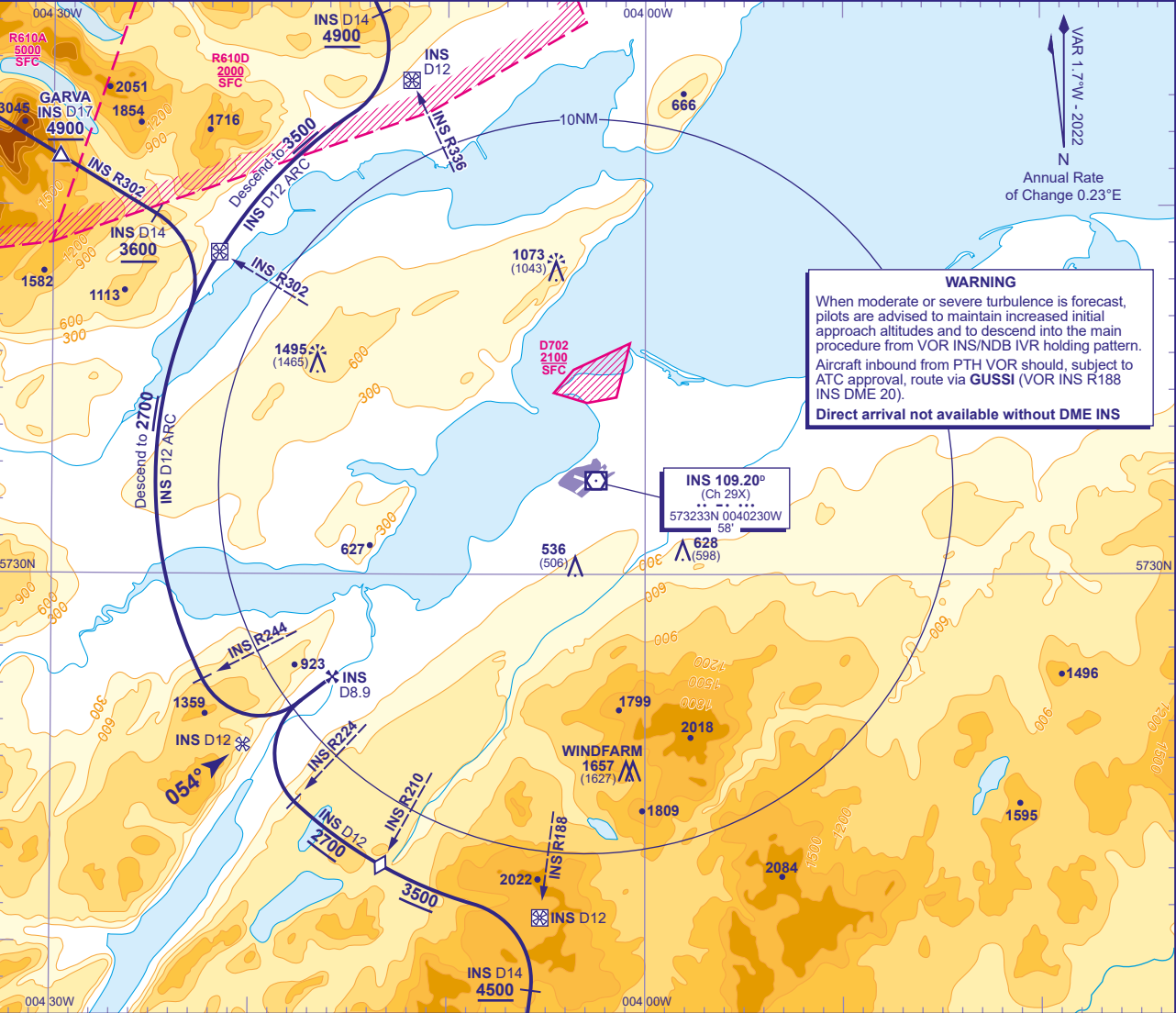
INVERNESS

Direct Arrivals  
VOR/DME  
RWY 05  
(ACFT CAT A,B)



TWR	118.405	INVERNESS TOWER	AD ELEVATION	31
RAD	122.605	INVERNESS RADAR	THR ELEVATION	30
ATIS	109.200	INVERNESS INFORMATION	OBSTACLE ELEVATION	1495 AMSL (1465) (ABOVE THR)
			BEARINGS ARE MAGNETIC	

TRANSITION ALTITUDE  
3000



**WARNING**  
When moderate or severe turbulence is forecast, pilots are advised to maintain increased initial approach altitudes and to descend into the main procedure from VOR INS/NDB IVR holding pattern. Aircraft inbound from PTH VOR should, subject to ATC approval, route via **GUSSE** (VOR INS R188 INS DME 20).  
**Direct arrival not available without DME INS**

**Arriving on N560 Northbound**  
Arrival from the south on VOR INS R188 (QDM 009°) **not below 5800**. Request ATC approval for DME arc arrival when within INS DME 40. After passing INS DME 25, with ATC approval, descend **not below 5000**, and after passing **GUSSE** (INS DME 20) descend **not below 4500**. From INS DME 14 turn left to establish on INS DME 12 arc clockwise. When established, descend along the arc **not below 3500**. After crossing step down VOR INS R210, continue descent to **2700**(2670), then from lead VOR INS R224 turn right onto extended FAT. From FAF INS DME 8.9 at **2700**(2670), continue with VOR/DME final approach.

**Arriving on N560 Southbound**  
Arrival on N560 **not below 5000**. Request ATC approval for DME arc arrival when near **BONBY**. When approved, after passing **BONBY** (INS DME 23) descend **not below 4900**. Establish on INS R336 (QDM 157°) from INS DME 14 turn right to establish on INS DME 12 arc anticlockwise. When established, descend along the arc **not below 3500**. After crossing INS R302, continue descent to **2700**(2670), then from lead VOR INS R244 turn left to establish on extended FAT. From FAF INS DME 8.9 at **2700**(2670), continue with VOR/DME final approach.

**Arriving on Y906 Southeastbound**  
Arrival on VOR INS R302 (QDM 123°) **not below 5200**. Request ATC approval for DME arc arrival when within INS DME 40. After passing INS DME 25, with ATC approval, descend **not below 4900**, and after passing **GARVA** (INS DME 17) descend **not below 3600**. From INS DME 14 turn right to establish on INS DME 12 arc anticlockwise. When established continue descent to **2700**(2670), then from lead VOR INS R244 turn left to establish on extended FAT. From FAF INS DME 8.9 at **2700**(2670), continue with VOR/DME final approach.